

# D.FRAME

---

## ELECTRICAL

PTY LTD

Connecting the Illawarra for over 20 years.



**D.FRAME ELECTRICAL - LEVEL 1, & 2 ELECTRICIANS**

**WOLLONGONG & NOWRA ELECTRICIANS**

## Wollongong

362 Keira Street,  
Wollongong, NSW, 2500

[info@dframeelectrical.com](mailto:info@dframeelectrical.com)

(02) 4226 6600

[dframeelectrical.com](http://dframeelectrical.com)

## Nowra

13/28-32 Trim Street,  
Nowra NSW 2541

[info@dframeelectrical.com](mailto:info@dframeelectrical.com)

(02) 4421 2442

[dframeelectrical.com](http://dframeelectrical.com)

# Company Introduction

## Illawarra's *One Stop Shop*

D.Frame Electrical Pty. Ltd. was established in 2003 and is a leading provider of electrical services across the Illawarra and South Coast regions of NSW with branches in Wollongong and Nowra.

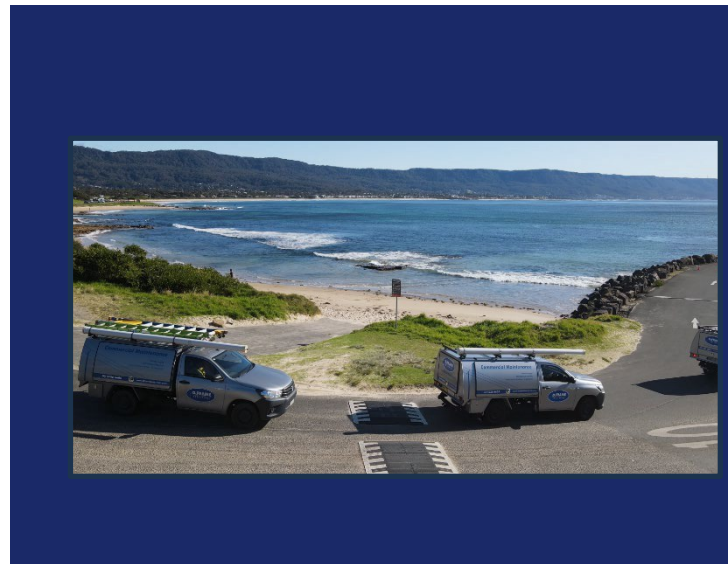
Our team currently consists of over thirty employees and is committed to delivering projects of the highest quality.

With local knowledge and experience our team are equipped with the expertise to ensure our clients receive a professional and personalised service.

We are Wollongong's number one Level 1 and 2 Electrical company having been authorised since 2001

Overall our goal is to provide a good reliable service, installing top quality products for a cost effective budget.

We have proudly worked across numerous Commercial Sectors, and pride ourselves in providing the best electrical maintenance services, commercial fit outs and upgrades while building strong relationships with the region's best building company's



## Accreditations





# Contents

## About

04 Our Vision

05 Services

08 Team

## Portfolio

12 Recent Projects

21 Additional Projects

## Safety

22 Safety Standards

## Our Vision

### 01. Our Why Statement

To power a sustainable and secure  
Community



### 02. Vision

To be recognized as provider of  
high quality power solutions



### 3. Our Values

- **Safety**  
We ensure a high level of quality in everything we do
- **Growth**  
We constantly evolve through innovation, development and sustainable solutions
- **Teamwork**  
Working together ensuring effective communication creating meaning relationships
- **Integrity**  
We hold ourselves to a high level of honesty, respect and reliability

# Commercial

## Commercial, Retail, Multi-Residential Construction & Fit-Outs:

Our team is experienced in providing electrical installations for large-scale construction projects including commercial and multi-residential premises having completed numerous projects throughout the lifespan of our company.

You can be assured that the service and workmanship you will receive will be of the highest standard. Through our combined history in the electrical industry, you can be confident that we have the experience and competence to deliver your project.

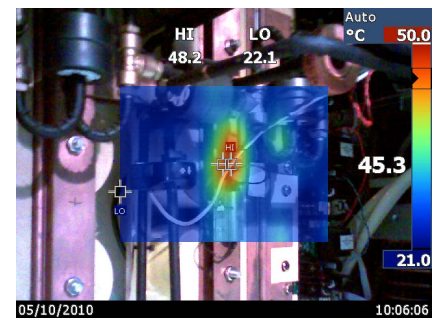


## Commercial Facilities Construction & Maintenance

D. Frame Electrical provides complete commercial/facilities maintenance solutions. We specialise in providing these solutions for both small- and large-scale commercial premises, clubs and pubs and multi-residential dwellings. Maintenance solutions can be tailored to the specific needs of our clients.

Our commercial / facilities maintenance solutions encompass the following:

- Routine preventative maintenance works;
- Emergency lighting & Residual Current Device (RCD) testing;
- Thermal Imaging;
- Electrical equipment testing and tagging;
- Efficient lighting design & installation;
- Electric Vehicle Charger Installations
- 24 hour on-call service;
- LED Light Upgrades
- Strata Maintenance



# Electric Vehicle Chargers

At D.Frame Electrical we transform space with EV Chargers! We have worked with numerous reputable brands and manufacturers, allowing us to gain valuable insights into the unique features and benefits of different EV charging systems

We unlock the power of tomorrow today by installing cutting-edge EV chargers in our clients space. Embracing the future of transportation while enhancing the property's appeal and functionality.

With our expert installation services, we seamlessly integrate state-of-the-art charging solutions tailored to our client's needs. From homes to businesses and beyond, we're here to empower our customers join the electric revolution.

EV charging elevates property value, attracts eco-conscious customers, and demonstrates commitment to sustainability with our hassle-free installation process.

By investing in EV charging infrastructure, it is not just powering vehicles, it is driving sustainability forward



**Charge Smarter. Charge with Us**



# ASP Services

## Level 2 Accredited Service Provider Works (Asp):

We have been one of Illawarra's premier Level 2 ASPs since 2003, being authorised to conduct works on the electricity networks of Endeavour Energy, Essential Energy and Ausgrid. Our team provide quality and efficient services for all categories of Level 2 work from Sydney to the South Coast.

We can submit all required documentation and load assessments to the appropriate supply authority for all new connections, and upgrades of existing services.



## Level 1 Accredited Service Provider

D.Frame Electrical is a Level 1 accredited service provider for works on overhead and underground power cable distribution networks. Servicing the Illawarra, Shoalhaven and Nowra regions, we are the region's most trusted Level one accredited service provider.

D. Frame Electrical offers a range of quality, accredited Level 1 services for residential and commercial customers. We undertake trench excavations, redundant network removal, and cable jointings with nearby power lines - all done professionally at competitive prices.

Level 1 Electrical Services:

- Line Trench Work and Cabling
- Line Cabling and Jointing
- Substation Installation and Upgrades
- Installation of Street lighting
- Electrical Pillar and Pit, Installation and Removal
- Redundant Network Asset Removal
- Supply and Installation of Generators
- Start to Finish Subdivision Solutions

[www.dframeelectrical.com](http://www.dframeelectrical.com)



CERTIFIED TO ENSURE ONLY THE BEST



## Darren Frame

### Managing Director &



---

### Project Manager

Darren Frame is the founder and director of D.Frame Electrical, establishing the company in 2003.

Darren has over 20 years' experience as an electrical contractor and has built up the organisation to be one of Illawarra's premier electrical contracting companies - specialising in large scale commercial and multi-residential installations, commercial maintenance packages and Level 2 & 1 electrical works.

With over 30 permanent employees and engagement of multiple subcontractors, Darren has built the company to be able to provide a wide range of electrical services. In addition to Level 2 & 1 service staff, Darren has established both a commercial maintenance sector and a construction sector to enable efficient allocation of staff and services to provide fast and reliable services to all clients.

DFE is one of the most experienced electrical companies in Wollongong to provide Level 2 works.

Since establishment, Darren has successfully obtained a Class A rating with Endeavor Energy.

He has worked hard to gain accreditation with Ausgrid and Essential Energy to ensure service coverage throughout all of NSW.

Darren obtained both Hold Access Authority and Low Voltage Access Authority (AA, HV AA) with Endeavor Energy in 2018 – one of a handful of electricians in the Illawarra to hold this.

Having secured many large-scale commercial and multi-residential projects, Darren has a vast amount of experience in all steps of the project from tendering, project management, through to completion. Providing reliable and quality service is Darren's passion and delivering projects with perfection is what drives him.

He has ensured DFE is consistently sought after for consultancy, experience and project delivery.

In addition to the above Darren is also a leadership mentor of up and coming leaders, from first year apprentices to senior managers and electricians.



# Phillip Green

## Nowra Branch Manager

Phillip joined D.Frame Electrical in 2021, taking on the role of manager for our Nowra branch and has brought a wealth of expertise in the electrical industry with him – in particular for Level 1 electrical works and management. Phillip started in the electrical industry in 1982 as an apprentice electrical fitter mechanic with the Northern rivers County Council.

Since then, he has worked in a general manager capacity for multiple companies where he managed teams of more than 350 staff as the Manager of Field Operations for the Far North Coast of NSW and as the Regional General Manager for the South Eastern Region of NSW for Essential Energy. More recently, Phillip was the Project Manager for the South Coast responsible for Level 1 overhead and underground constructions.

Phillip has coordinated and lead multi-disciplined workforces to ensure the efficient and safe operation of electricity networks and electricity service to homes and businesses throughout NSW. He is passionate about providing top quality service to customers whilst maintaining the highest safety standards.

While also passing on his wealth of knowledge through years of industry experience



## The Nowra Branch

Phillip is the Manager of our Nowra Branch. He is well experienced within the electrical industry having started in 1982. Our Nowra branch offers the same level of service and guarantee that D.Frame Electrical is known for. We pride ourselves on our workmanship and look forward to expanding our services more into the Nowra Region.

# Richard Dello Iacono

## Commercial Service / Operations Manger



In 2023 Richard proudly assumed the role of Commercial Service Manager. In this capacity, Richard took charge of overseeing maintenance for clubs situated in the Illawarra and South Coast regions, demonstrating his ability to manage diverse electrical needs.

His responsibilities expanded further as he embraced the challenge of maintaining strata companies, clubs and SES NSW HQ conducting meticulous maintenance initiatives across the expansive Illawarra and South Coast area.

Richards responsibilities also include completing small construction projects, showcasing versatility and commitment to delivering excellence. This also includes overseeing the installation of EV chargers in both residential homes and commercial properties, closely collaborating with EVSE to ensure seamless integration.

Richard has shown how eager he is to further enhance his knowledge and contribute to the overarching success of D.Frame Electrical that he has now progressed into the role of Operations Manager.

He is committed to elevating D.Frame Electrical to be the electrical company of choice in the Illawarra and South Coast region.

Richard aspires to make D.Frame an even more sustainable company, implementing practices that contribute to both environmental responsibility and long-term success.

He is enthusiastic about the prospect of driving positive change within the company, solidifying its position as an industry leader while maintaining a commitment to sustainability and excellence.



## Jake Doswell

---

### **ASP 2 / Junior Project Manager**

Jake joined the team at D.Frame Electrical in 2022 as an Level 2 Supervisor.

During his time for the company Jake has become a proficient estimator for large (and small) scale Level 2 and construction projects. Jake also has a wealth of experience working on the Endeavor Energy network

Jake has a passion for developing energy efficient (and cost efficient) lighting proposals for our clients – ensuring installations are future-proofed, low maintenance and effective to run.

# Portfolio

Following is a sample of D.Frame Electrical's recent projects. These are just a handful of the many projects we have delivered over the last 20 years to showcase the range of works and results we can deliver. For a more comprehensive look at our projects, you can check out our website.



## Master Builders Club Refurbishment

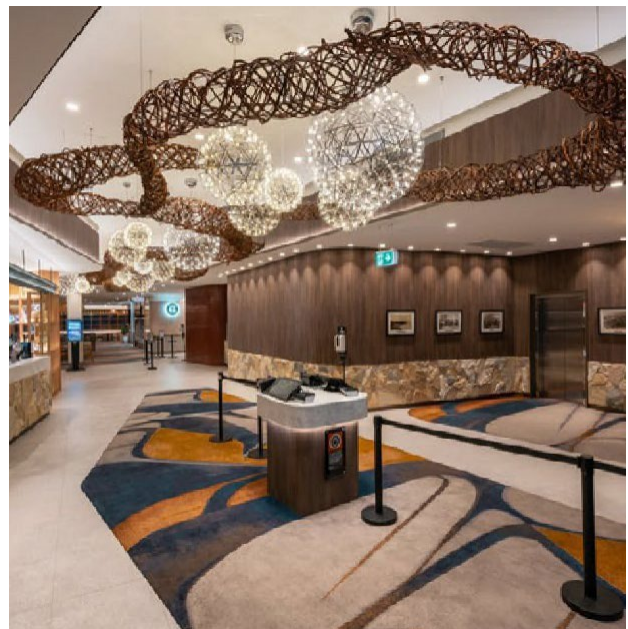
---

**Project Type:** Commercial Electrical  
Installation

**Project Description:** Installation of  
electrical and data for refurbishment of  
Leagues Club

**Total Value:** \$ 1.4 mil

**Duration of Project:** 12 months



## Dapto Leagues Kitchen Refurbishment

---

**Project Type:** Commercial Electrical Installation

**Project Description:** Installation of electrical and data for refurbishment of Leagues Club

**Total Value:** \$ 485k

**Duration of Project:** 10 months



## 4 Lake Entrance Road, Level 1 Subdivision

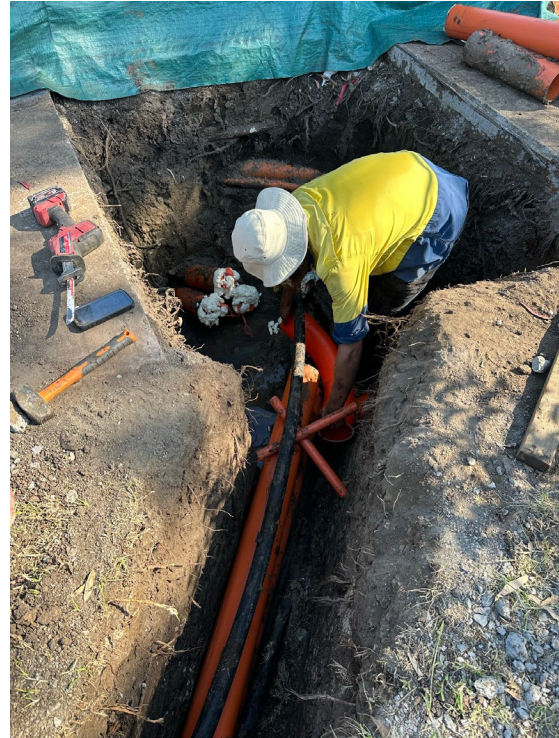
---

**Project Type:** Level 1 Subdivision

**Project Description:** Installation of a Padmount Substation with underground cabling and terminations

**Total Value:** \$ 192K

**Duration of Project:** 4 months



## Port Kembla, Hydrogen Plant

---

**Project Type:** Level 1 Project Works

**Project Description:** Installation of a dual 1000KVA Substation

**Total Value:** \$ 189K

**Duration of Project:** 3 months



## Apartments - 6-10 Beatson St, Wollongong, NSW

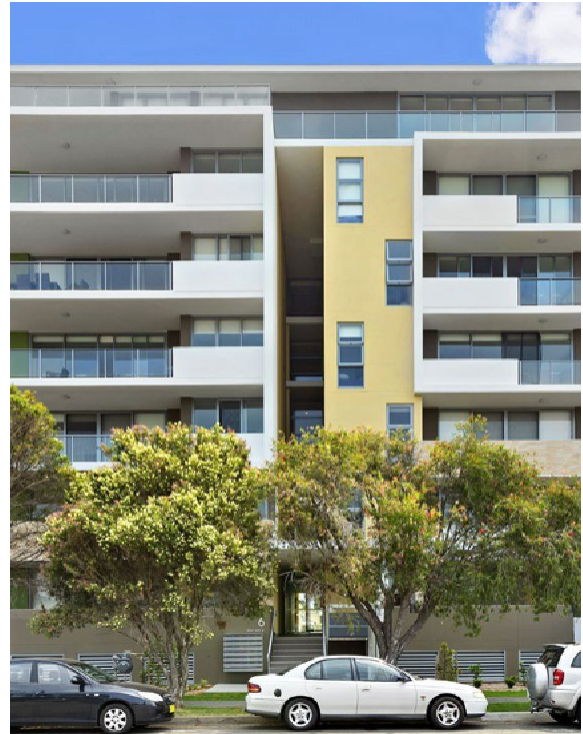
---

**Project Type:** Multi-residential Electrical Installation

**Project Description:** Installation of electrical and data for 33 residential units

**Total Value:** \$ 327k

**Duration of Project:** 12 months





## Apartments – 23 Loftus St, Wollongong, NSW

---

**Project Type:** Commercial Electrical Installation

**Project Description:** Project Description: Installation of electrical, data and fire for 12 residential & 2 commercial units

**Total Value:** \$ 180k

**Duration of Project:** 12 months



## Shell Cove Waterfront Tavern

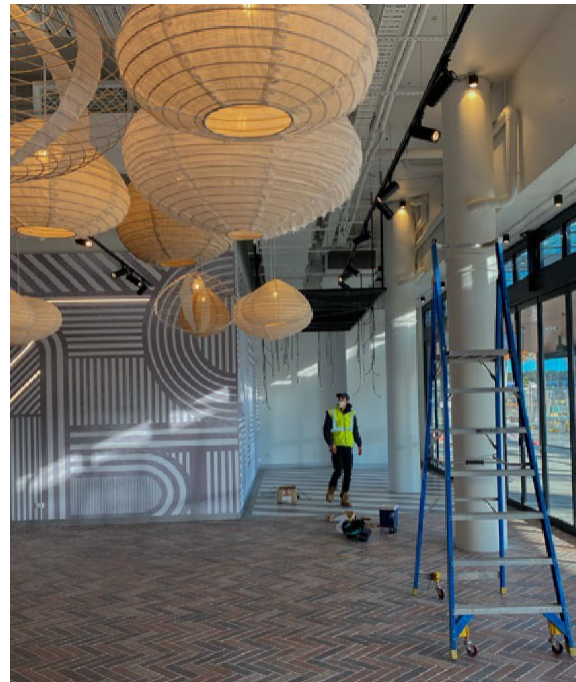
---

**Project Type:** Commercial Electrical Installation

**Project Description:** Installation of electrical and data for club refurbishment, including relocation of poker machines

**Total Value:** \$ 500k

**Duration of Project:** 12 months



## West's Illawarra Leagues Club Refurbishment

---

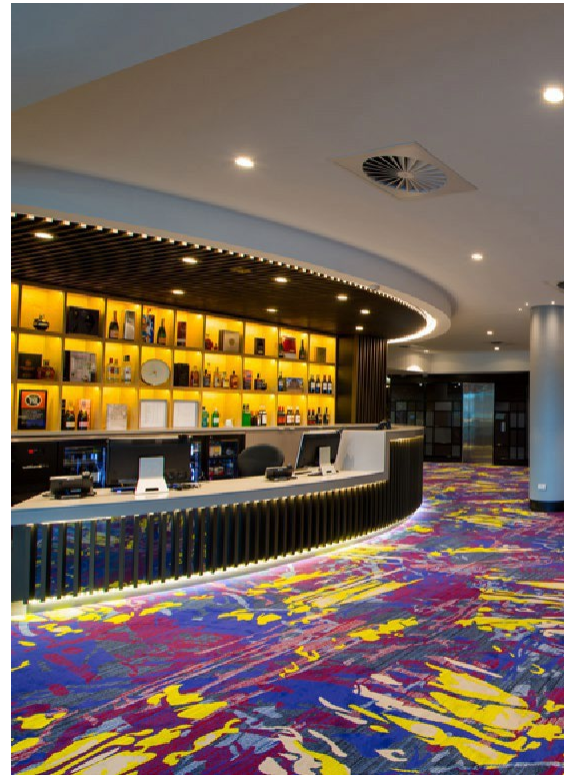
**Project Type:** Commercial Electrical Installation

**Project Description:** Installation of electrical and data for refurbishment of Leagues Club

**Total Value:** \$ 200k

**Duration of Project:** 5 months

362 Keira Street, Wollongong New South Wales 2500



## Woonona Bulli RSL – Refurbishment

---

**Project Type:** Commercial Electrical  
Installation

**Project Description:** Installation of electrical  
and data for club refurbishment, including  
relocation of poker machines

**Duration of Project:** 12 months



## Culburra Bowling Club – Bistro Refurbishment

---

**Project Type:** Commercial Electrical  
Installation

**Project Description:** Installation of  
electrical and data for club  
refurbishment

**Total Value:** \$ 115k

**Duration of Project:** 5 months



# Commitment To Safety

\*JSEA & SWMS,  
Toolbox meetings

\*WH&S Manual

\*Performance  
reviews &  
audits

\*Pro-Active  
workforce



# Commitment to Health & Safety in the Workplace

D.Frame Electrical is committed to providing and maintaining a safe and healthy workplace for all of its workers (including employees, contractors and volunteers). The business further recognises its responsibilities to provide a safe and healthy work environment for clients, visitors and members of the public. We, so far as is reasonably practicable, ensure that no person(s) are put at risk from activities carried out by the business.

Creating a safe work setting and caring for the environment is the responsibility of all business personnel and contractors at every level of the company with no exception. To achieve this stated outcome, the commitment and contribution of each and every worker is required and encouraged.

D.Frame Electrical provides, maintains and promotes a safe work environment and Safety Management System (SMS)\* through the allocation of resources, information, instruction, training and supervision provided as depicted within its Work Health and Safety (WH&S) Manual.

This manual and its associated systems of work are kept current to take account of changes in business operations and the business environment and to promote a process of continuous improvement and full compliance with relevant health and safety legislation. Operational work health and safety management is continuously monitored and reviewed through development of reporting processes to allow continuing practice improvement.

We are passionate about preservation of the surrounding environment. Our Environmental Management Plan is used to ensure our impact on the environment is minimal and include an environmental risk analysis on each job prior to works\*\* to identify and appropriately manage any activity that may impact our surrounds.

We show our commitment to safety by the following.

- Large 6 Monthly Safety Meetings
- Tuesday Safety Meetings
- Toolbox Talks - Everyday
- Regular Safety Audits
- Reflection

# D.FRAME

---

## ELECTRICAL

PTY LTD



## Wollongong

362 Keira Street,  
Wollongong, NSW, 2500

[info@dframeelectrical.com](mailto:info@dframeelectrical.com)

(02) 4226 6600

[dframeelectrical.com](http://dframeelectrical.com)

## Nowra

13/28-32 Trim Street,  
Nowra NSW 2541

[info@dframeelectrical.com](mailto:info@dframeelectrical.com)

(02) 4421 2442

[dframeelectrical.com](http://dframeelectrical.com)